



THE PRAISE PULSE

A Publication of Praise Lutheran Church,
Fort Wayne, Indiana

February 2021 issue

NEW YEAR NEW ME

STARTING THE YEAR OFF RIGHT

2 CORINTHIANS 5:17

2 Corinthians 5:17

“Therefore, if anyone is in Christ, he is a new creation; the old has gone, the new has come!”

Weekly Worship Schedule

- **Worship 10:30am; doors open at 10:00am**
- **You can also join us online on our YouTube page**
- **Adult Bible Study at 9:30am (starting Feb. 7)**

What's inside:

- ~ Letter from Pastor Seth
- ~ Upcoming Events
- ~ Ministries
- ~ Stained Glass Window Update
- ~ Church/Budget Updates
- ~ Volunteers Needed
- ~ Little Praisers' Updates
- ~ Calendar
- ~ Birthday/Anniversaries

Worship Schedule

Sunday, February 7 — 10:30am with Holy Communion

Sunday, February 14 — 10:30am

Ash Wed., February 17 — 7:00pm with Holy Communion

Sunday, February 21 — 10:30am with Holy Communion

Sunday, February 28 — 10:30am

~**Ash Wednesday** is Wednesday February 17. We will have worship that night at 7:00pm and will observe the Imposition of Ashes along with Holy Communion.

~If You Are Looking For A Church Home/Family, interested in learning more about who we are or would like to discuss any of the following, baptism, setting up a hospital or home visit, arranging a counseling session, planning a wedding, etc., please see Pastor Seth after worship. He would love to visit with you!

~Hear God's Word for you through **Worship Anew!** Worship Anew celebrates the new life all people have in Jesus with a weekly 30 minute broadcast service. Christ's love is shared through scripture readings, favorite church hymns, prayers, and a pastor's message that reveals God's grace and truth. To learn more, visit WorshipAnew.org or call 888-286-8002.

Sunday School

We are very excited to learn new and amazing things about our God! We look forward to seeing all of our children and families there! Contact the church office for more information .

POSTPONED
Sunday Mornings

office@praiselutheran.org



Confirmation

Praise will offer additional Christian education (Confirmation) for Youth grades 6-8 as well as for those Junior/Senior High Youth who have not been confirmed in the Christian Faith.

If you would like more information, please contact Pastor Seth at:

pastorseth@praiselutheran.org



From the Pastor's Desk

"Are they open?" I can distinctly remember asking that question out loud with Kara not long after COVID came on the scene. As our thoughts were directed to dinner options through local restaurants, we would often look at each other and ask that question. Before long, we found ourselves echoing that question along with others as thoughts turned to groceries, favorite shopping destinations, parks, and so on. I wonder if that was your experience as well during the initial waves of COVID? Where you or someone you know asked aloud, *"Are they open?"* In some cases, the signage told the tale:

"Thank you for 30 great years. We will miss you!"

"Hoping to reopen soon."



"We are sorry to say that after decades of service we will be closing our doors for the last time on Friday."

Along those lines, I wonder if folks in our community have asked the same question of The Church- *"Are they open?"* I wonder how many are still asking?

Despite the challenges of the times: wars, financial strains, illnesses, political changeovers, The Church has always remained *open* for Gospel business. Thanks be to God! And yet, sometimes, The Church has left its neighbors wondering whether or not they were truly open. Consider:

Schedules are loaded to the brim.

The call to work longer hours and additional days is strong.

Identities remain tied to what we are doing as opposed to Whose we are (hint: you are a uniquely created child of God).

Opportunities to purchase items for our homes, comfort, and kingdom leave little leftover. The list goes on.

While the doors have remained open, perhaps The Church (God's people) has lived a *closed* life, both to God and its neighbors.

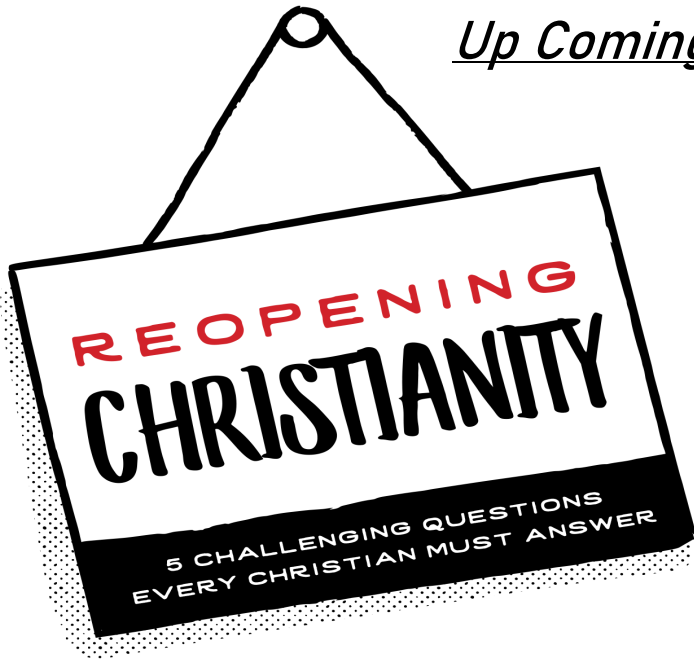
But what if... in 2021 God's people surrendered all worries and fears to our loving Lord Jesus. *What if...* The Church heard Jesus' call to gather for Gospel ministries that are still needed and available even in the midst of COVID? *What if...* in place of looking back at the ups and downs of 2020, and asking ourselves what we will do to move ourselves forward, we focused on The God Who consistently makes a way forward for His people to truly live? *And what if...* instead of returning to patterns of thinking and living that have still left us empty, unsatisfied, and tired, we returned to The Redeemer Who says, "Come to Me all you who are weary and burdened, and I will give you rest"?

In 2021 God is opening His Church for Gospel life (and God knows the world needs it!). And here's the great part- God is doing it by first opening your heart (along with others in His Church) to receive life and refreshment through His Son, Jesus!

Over the next several weeks you will hear about opportunities to engage life in The Church at Praise Lutheran through opportunities connected to Worship, Sunday Morning Bible Study, Little Praisers Ministries, outreach, fellowship, stewardship, etc. And as you do, may God so move your heart to remain open to His leading, with the result others in our community know you and me as *open* and active for Gospel life in the Lord!



-Pastor Seth



Up Coming Events

Adult Bible Study will return soon! We look forward to seeing everyone at our new series, Reopening Christianity, by Zach Zehnder. See below for more details on the series!

**Beginning Sunday February 7
at 9:30am in the Fellowship Area**

***Contact Pastor Seth if you would like to join virtually.**

Reopening Christianity

Author: Zach Zehnder

Before a global pandemic had swept our nation and world, our collective witness of Jesus to others was at best a shadow of what it ought to have been. Sadly, the people we are trying to reach sometimes characterize us as the exact opposite of the One that we are pursuing after. How could this be? Jesus is known for grace, good works, unity, and love. His followers have been known for judgment, hypocrisy, division, and hatred. We didn't miss the mark by a little bit. We completely misfired.

In this time where there is still great uncertainty in our world, I am certain the world needs a far greater expression of Jesus Christ.

2020 has been a year filled with debates on reopening strategies. This has been true for businesses, schools, universities, sports programs, and even churches.

Even though 2020 has produced many obstacles, it has also brought an incredible opportunity for us to examine thoroughly what it truly means to be Christian.

What if we could reopen Christianity? How would we reopen? What would we look like? What would we do? What if we could start by acknowledging that we have gone far away from who the God in the Bible has called us to be? What if we could use this time to refocus and come out a stronger representation of who Jesus is?

This study explores five questions every Christian must answer in this amazing opportunity to reopen Christianity!

Are you ready?

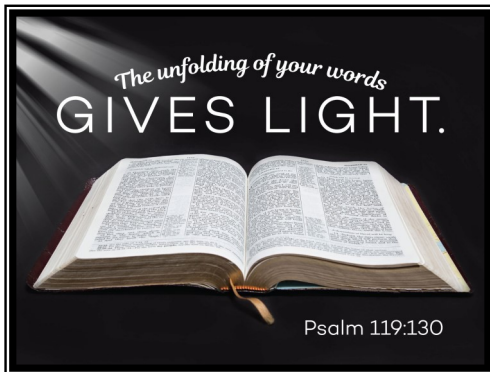
WEEKLY MINISTRIES & OUT REACH

*Postponed
Grades 6-12*

We are looking forward to the day that we can continue our youth ministry together. Continue to watch our church website and Pulse issues for the latest updates on upcoming events and reopening procedures for our ministries.



For details contact the church office



Women's Bible Study

Postponed

Women's Bible Study will start a new topic soon. We will keep you posted when it is decided and all new ladies are welcome! Please continue to watch our website and further Pulse issues for more information.

Community Clubhouse

**Postponed at this time for
community health and safety.**

We normally meet for lunch, cards and games at SunRise Café (10230 Coldwater Road) at 11am on the 1st and 3rd Tuesday of each month. We hope to see you soon once again! For more information you can visit our website at www.praiselutheran.org or contact **Becky Stiefel** at (260) 416-9197.



Church Updates

Ash Wednesday

Ash Wednesday is Wednesday February 17. We will have worship that night at 7:00pm and will observe the Imposition of Ashes along with Holy Communion.

As we continue into the Lenten season further Wednesday services, Maundy Thursday Service, Good Friday Service, and Easter Services will be announced both in services and in future Pulse editions. Please keep watching our website and social media for the most up to date information!

Website Updates

The website is in the process of being updated and we are still in the process of getting a few items together for the new layout. You will notice that some of the updates include The Pulse, as well as having a section for bulletins to be downloaded from the website. We will soon be adding pictures to our staff listening; that will include Praise Lutheran Church, Little Praisers, and Council Leadership. Continue to keep an eye on further updates both here and on the website! Visit us at praiselutheran.org

Stained Glass Window Update

As you may know we received the granted funding for the stained glass window behind the altar. This has been a lengthy and heartfelt project which, with God's blessings and guidance, we should see completed soon. The project is projected to begin this month. Thank you to all who have contributed to this project through the years. More information will continue to be announced.

~The Stained Glass Committee



~A Huge Thank you to, Mary Voorhees, for her leadership in getting this Grant from Lutheran Foundation approved so Praise can complete the Stained Glass Window Project behind the Altar! We all appreciate your hard work here so much!

Contribution/Budget Summary

Brothers & Sisters in Christ,

We have much to be thankful for at Praise Lutheran Church entering 2021. While we were not exempt from the many challenges and tribulations that the world faced, we stood steadfast in our faith and pulled through to become stronger as a congregation. We were able to complete two significant capital improvement projects on our campus, as well as finalize a new budget that is allowing us to hire additional staff that will support our efforts in creating not only an improved worship setting, but also increasing our exposure to the public via virtual platforms.

Many people will look back a 2020 with a negative review and be thankful we have now crossed the threshold into 2021. We at Praise Lutheran Church can count our blessings. We were able to weather the storm well and finish strong as we came in less than 3% below our targeted budget for 2020 contributions. December giving was very inspiring as we exceeded our anticipated contributions by \$5,759. Praise God from whom all blessings flow!

Peace to you all in 2021, I look forward to seeing where God takes us this coming year.

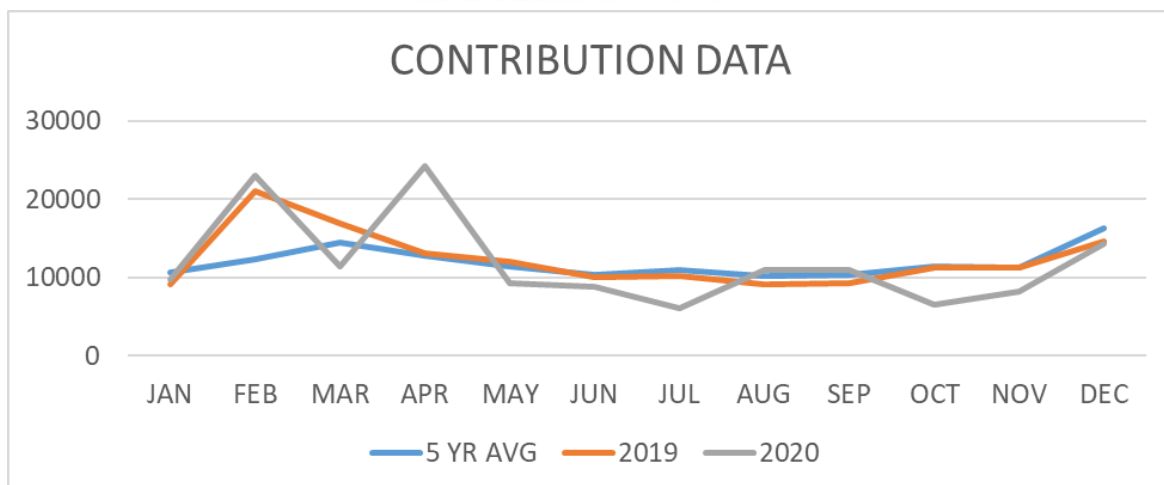
Andy Carr — Financial Secretary, Praise Lutheran Church

PLC 2020 Contribution Review
(Removal of April Grant)

MODIFIED DATA



CONTRIBUTION DATA





Scholarship Opportunity
Purdue University

Beta Sigma Psi National offers Martin Luther Scholarships to select incoming freshmen.

The Beta Sigma Psi Chapter at Purdue also offers a Christian Leadership Award scholarship annually. The Alumni Chapter President, Jeff Williams. Jeff can assist any young men who may be interest in attending Purdue University.

Information on both of these opportunities can be found at:

<https://www.betasigmapsi.org/scholarships-for-high-school-students/>

Interested in getting a
Scholarship based on your
religion?



Beta Sigma Psi at Purdue is a Lutheran Fraternity
that helps young men with their spiritual,
scholastic, and social aspirations.

The Chapter is giving out a scholarship to a Lutheran Senior that is
going to Purdue University.

Interested?
Fill out this
form:



With any questions you may
have, contact:

betasigrush@gmail.com

Find us on Instagram @
[betasig_purdue](https://www.instagram.com/betasig_purdue)



Beta Sigma Psi

*Growing young
men Spiritually,
Scholastically, and
Socially*

VOLUNTEER

- **Ushers Ministry** (gentlemen, ladies and confirmed youth)
- **Greeters Ministry** (gentlemen, ladies, and confirmed youth) Sign up sheets for Ushers & greeters in the Fellowship area or contact the church office to be included.
- **Counting Ministry** (gentlemen and ladies, 25 years and older) See Andy Carr—or email him at finance@praiselutheran.org

(Sign up sheets in the Fellowship Area)

Current Opportunities to Serve

Among the wonderful opportunities to serve within Praise/Little Praise Ministries are those connected with Leadership, particularly Church Council, Spiritual Care, and the Childcare Board. The following positions and boards/groups are currently open:

- **Audio-Video**
- **Sunday Morning Worship ministry Preparations**

For questions regarding the responsibilities and duties of these positions please revisit Praise's Constitution and By-laws (available upon request). Please take some time to pray about and consider the ministry opportunities mentioned above. If you feel you or someone you know may be Biblically qualified and Holy Spirit-led to serve in a position, please pass this information along to Praise's Administrative Assistant, Nicole Welsh (office@praiselutheran.org) or the leadership's awareness and communication purposes. You may also contact the Church Council President, Jack Gumbert, or a member of Spiritual Care for more information.

Praise Team Members Needed

Do you sing or play an instrument?

Would you like to help lead worship?

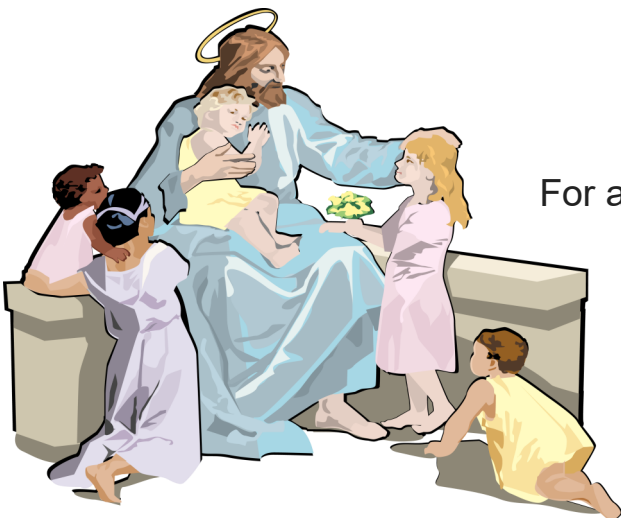
If your answers are "Yes" then please contact Janelle at music@praiselutheran.org



Happy New Year! We hope you all had a great holiday season and that your new year is off to a great start! The end to our 2020 here at Little Praisers was a good but hectic one. Our classes had their birthday celebrations for Jesus, and they loved every minute of it!

January 24-30 was National Lutheran Schools Week! We participated in spirit week that week for the children with different themed days for everyone to enjoy.

We have re-enrollment and open enrollment that will all be taking place this spring also, which keeps us very busy. We are still praying for candidates for teachers to come our way too. Continued prayers for guidance are appreciated!



For availability please contact our Little Praisers Preschool and Day Care!

Roxanne Gerardot
Little Praisers Director
lpdirector@praiselutheran.org
260-490-9529

Sanctuary Availability for Prayer

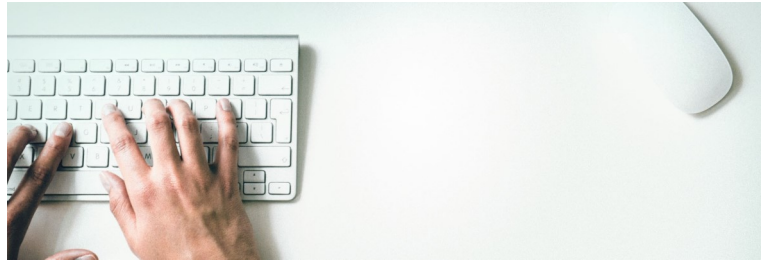
In an effort to support those seeking to use the Sanctuary space throughout the week for prayer and devotional time:

Please contact the church office with any questions you might have (260-490-7729) to discuss access options.

Check out the church web site:

praiselutheran.org

You will find the church's calendar, a chart for those helping on Sunday mornings, sermons, the Pulse, weekly announcements/meetings, information about Little Praisers, and so much more.



Be sure to also Check out :

~Our Facebook

~Our Instagram

~Our YouTube

Many gift cards are available.



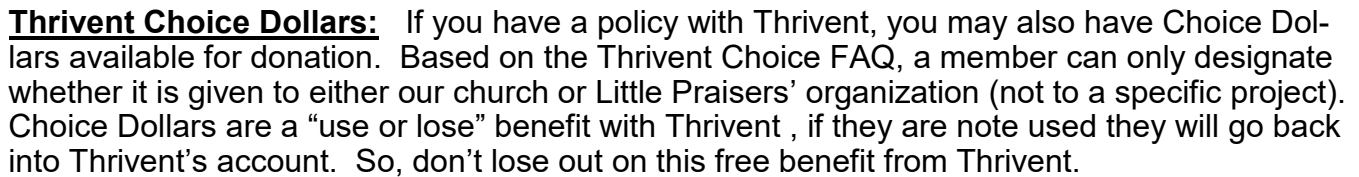
Contact the church office with any questions or concerns.



If you or someone you know would appreciate a time of prayer and scripture before/after a procedure or test, please contact Pastor Seth. He would be happy to visit with you at the hospital or office.

Email: pastorseth@praiselutheran.org

Phone: 260-490-7729



The Lutheran Foundation

Do you know any students who plan to, or are, in a nursing or a healthcare program in Fort Wayne? They may be eligible for a scholarship from The Lutheran Foundation. To find out more information, visit www.thelutheranfoundation.org





<https://thelutheranfoundation.org/resources/faqs/scholarships-faqs-health-community/>

<https://thelutheranfoundation.org/impact/health-scholarships/>

THRIVENT ACTION TEAM CENTER		
Complete this form if you have a project that you feel would qualify for a Thrivent Action Grant \$250.		
Requester Name:	Request Date:	
Requester email:	Requester Telephone #:	
Project Name:	Project Event Date:	
Summarize your project (2-3 sentences):		
How would you describe this project to others?		
What will you do?		
What impact will this project have?		
How will your volunteer team be involved?		
Summarize your project (2-3 sentences):		
How will you use the seed money to kick-start your project?		
Appropriate uses:		
Ingredients to prepare and serve a meal to the needy		
Create or print flyers or other project promotions		
Educational brochures or handouts		
Project supplies		
Inappropriate uses:		
Directly giving seed money to the cause		
Purchase of items without a team activity		
Gift cards		
Social gatherings without service to others		
Are you a Thrivent Member?	YES / NO	
Have you submitted a Thrivent Action Grant before?	YES / NO	
Submit this form to Michele Prachar, mlorachar@hotmail.com or Tricia Niebuhr, finance@oralcelutheran.org		

February

2021

Sunday	Monday	Tuesday	Wednesday	Thursday	Friday	Saturday
	1 Black History Month	2	3	4	5	6
7 Service 10:30am  Adult Bible Study 9:30am	8	9	10	11	12	13
14 Valentine's Day Service 10:30am Adult Bible Study 9:30am	15 Presidents Day	16	17 Ash Wednesday Service 7:00pm 	18	19	20
21 Service 10:30am  Adult Bible Study 9:30am	22	23	24	25	26	27
28 Service 10:30am Adult Bible Study 9:30am			 This symbol indicated a communion worship service			

Our Prayer Chain will gladly offer prayers for you or a loved one who is suffering a crisis in their life.

Requests should be directed to:
Lois Gumbert at 637-3010
or loigumbert@gmail.com

"Keep praying earnestly for all Christians everywhere."
Ephesians 6:18 TLB



ARE YOU A HANDY HELPER?

**Property
Ministry**



A big thank you to all those who have devoted their time to repair and correct things at Praise.

If you have a skill that you are willing to share with property, please contact the Church Office.



Birthdays

- 2 Steve Shoup
- 3 Karen Hart
- 6 Barabara Rasdorf
- 9 Marianne Krueger
- 11 Andrea O'Day
- 11 Evan Korte
- 13 Linda Arven
- 14 Jennifer Andreson
- 16 Braeten McCrea
- 16 Mitchell Foster
- 17 Shayna Anderson
- 18 Jeanenne Gallmeyer
- 18 Penny Gumbert
- 19 Bob Zigler
- 19 Elaine Battenberg
- 22 Debbie Stabler
- 22 Hilda Stoppenhagen
- 22 Susie Dykhuizen
- 26 Bob Timble
- 27 Diana Wallace



Anniversaries

- 4 Richard and Robin Cooper
- 6 Bob and Deb Kennedy
- 18 John and Susie Dykhuizen
- 23 Richard and Marilyn Renbarger

Praising God in vibrant
Worship
Reaching out with Christ-
centered witness
Anchored in God's Word
and Sacraments
Interceding for others
Stewards of God's varied
gifts for the building up of
His Kingdom
Equipping the saints for
works of service

Congregational Communications

If anyone has information for the bulletin or the Pulse, please make sure the information is sent to office@praiselutheran.org, or call the office at 260-490-7729.

Pulse items due by the 15th of each month Weekly bulletin items due by Monday

(Thanks in advance for your cooperation.)

THE PRAISE PULSE

Praise Lutheran Church
1115 West Dupont Road
Fort Wayne, IN 46825

PRAISE LUTHERAN CHURCH VISION STATEMENT

"Praise Lutheran Church, empowered by the Holy Spirit, strives to be a joyous body of Christ-followers, united by God's grace to P.R.A.I.S.E. Him; equipped to passionately serve and witness."

PRAISE LUTHERAN CHURCH

(Missouri Synod)

1115 West Dupont Road, Fort Wayne, IN 46825

CHURCH PHONE: (260) 490-7729

Daycare Phone: (260) 490-9529

FAX: (260) 490-0364

Website: www.praiselutheran.org

Rev. Seth P. Korte, Senior Pastor
pastorseth@praiselutheran.org

Janelle Deal, Praise Team Lead
music@praiselutheran.org

Nicole Welsh, Admin Assistant
office@praiselutheran.org

Roxanne Hudson-Gerardot, Little Praisers Director
lpdirector@praiselutheran.org

Lois Gumbert, Prayer Chain
loisgumbert@gmail.com

OUR WORSHIP SCHEDULE

- Worship 10:30am;
doors open at
10:00am
- You can also join us
online on our
YouTube page
- Adult Bible Study at
9:30am

